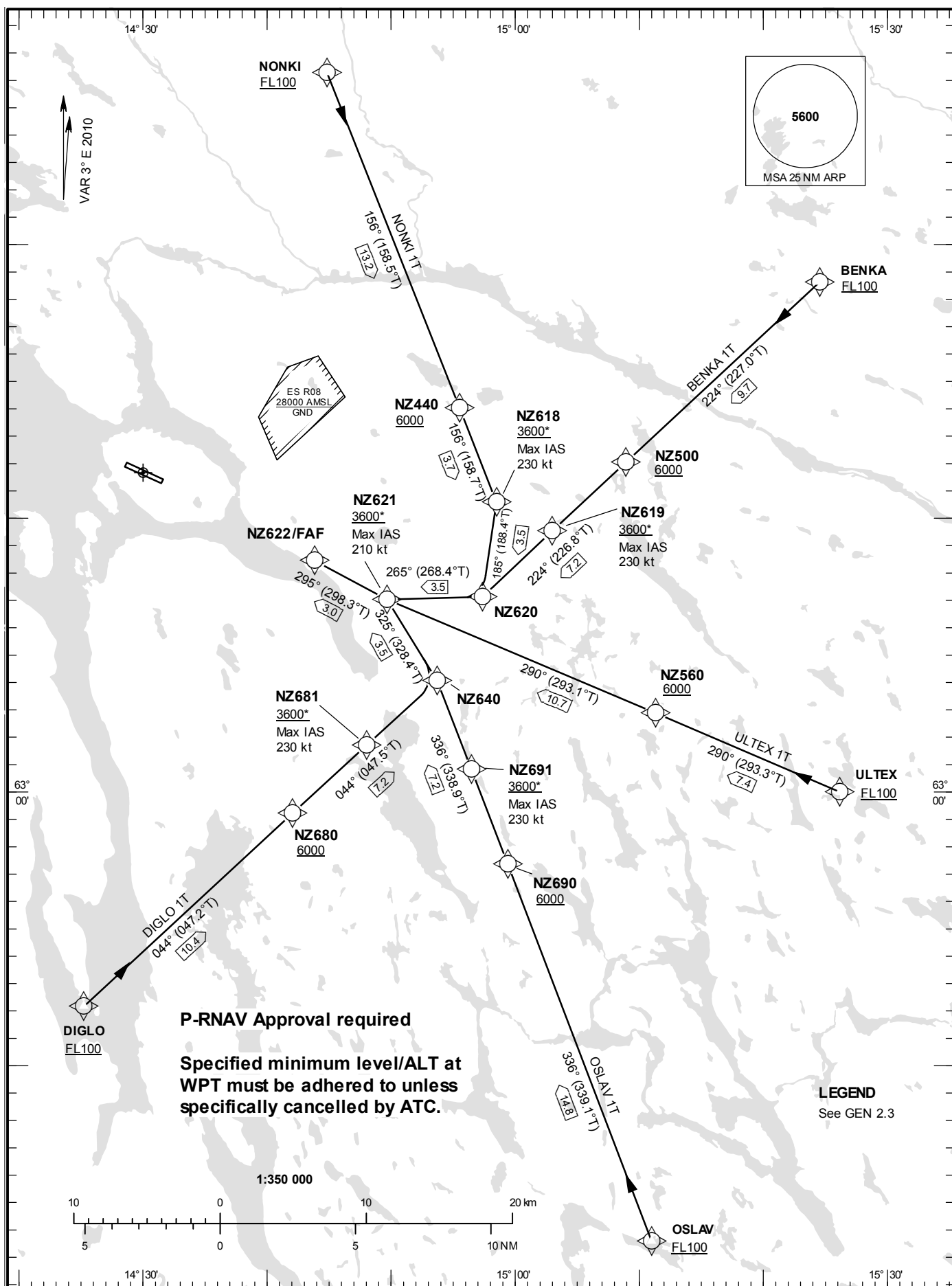


STANDARD INSTRUMENT
ARRIVAL CHART (STAR) -
ICAO

HGT and ALT in ft
BRG are MAG (True)
TA 6000 ft AMSL

ÖSTERSUND TOWER 135.655



ÄRE ÖSTERSUND**Prescribed Coding of P-RNAV (GNSS) STAR for RWY 30**

REMARK

P-RNAV Approval required.

Specified minimum level/ALT at WPT must be adhered to unless specifically cancelled to ATC.

Operators unable flying P-RNAV shall inform ATC by using phraseology "UNABLE RNAV STAR". ATC will then provide vectors or provide clearance via conventional STAR.

RNAV STAR	Path Descriptor	Waypoint Identifier	Fly-over	Course °M(°T)	Turn Direction	Altitude	Speed	VPA/RDH	Rec Navaid	Navigation Specification
BENKA 1T (BENK1T)	IF	BENKA				+FL100				
	TF	NZ500				+6000				
	TF	NZ619				+3600	230			
	TF	NZ620								
	TF	NZ621				+3600	210			
	TF	NZ622				3600				

STAR instruction: BENKA (FL100 or above) – NZ500 (6000 ft or above) – NZ619 (max IAS 230 kt, 3600 ft or above)
– NZ620 – NZ621 (max IAS 210 kt, 3600 ft or above) – NZ622 (3600 ft)

RNAV STAR	Path Descriptor	Waypoint Identifier	Fly-over	Course °M(°T)	Turn Direction	Altitude	Speed	VPA/RDH	Rec Navaid	Navigation Specification
DIGLO 1T (DIGL1T)	IF	DIGLO				+FL100				
	TF	NZ680				+6000				
	TF	NZ681				+3600	230			
	TF	NZ640								
	TF	NZ621				+3600	210			
	TF	NZ622				3600				

STAR instruction: DIGLO (FL100 or above) – NZ680 (6000 ft or above) – NZ681 (max IAS 230 kt, 3600 ft or above)
– NZ640 – NZ621 (max IAS 210 kt, 3600 ft or above) – NZ622 (3600 ft)

ÅRE ÖSTERSUND

RNAV STAR	Path Descriptor	Waypoint Identifier	Fly- over	Course °M(°T)	Turn Direction	Altitude	Speed	VPA/ RDH	Rec Navaid	Navigation Specification
NONKI 1T (NONK1T)	IF	NONKI				+FL100				
	TF	NZ440				+6000				
	TF	NZ618				+3600	230			
	TF	NZ620								
	TF	NZ621				+3600	210			
	TF	NZ622				3600				

STAR instruction: NONKI (FL100 or above) – NZ440 (6000 ft or above) – NZ618 (max IAS 230 kt, 3600 ft or above)
– NZ620 – NZ621 (max IAS 210 kt, 3600 ft or above) – NZ622 (3600 ft)

RNAV STAR	Path Descriptor	Waypoint Identifier	Fly- over	Course °M(°T)	Turn Direction	Altitude	Speed	VPA/ RDH	Rec Navaid	Navigation Specification
OSLAV 1T (OSLA1T)	IF	OSLAV				+FL100				
	TF	NZ690				+6000				
	TF	NZ691				+3600	230			
	TF	NZ640								
	TF	NZ621				+3600	210			
	TF	NZ622				3600				

STAR instruction: OSLAV (FL100 or above) – NZ690 (6000 ft or above) – NZ691 (max IAS 230 kt, 3600 ft or above)
– NZ640 – NZ621 (max IAS 210 kt, 3600 ft or above) – NZ622 (3600 ft)

RNAV STAR	Path Descriptor	Waypoint Identifier	Fly- over	Course °M(°T)	Turn Direction	Altitude	Speed	VPA/ RDH	Rec Navaid	Navigation Specification
ULTEX 1T (ULTE1T)	IF	ULTEX				+FL100				
	TF	NZ560				+6000				
	TF	NZ621				+3600	210			
	TF	NZ622				3600				

STAR instruction: ULTEX (FL100 or above) – NZ560 (6000 ft or above) – NZ621 (max IAS 210 kt, 3600 ft or above)
– NZ622 (3600 ft)